

GPS File Uploader Manual

An Overview of the Data Validation and File Uploading Process

Written by: Matt McKimmy
Michigan State University



Revised: April 30, 2004

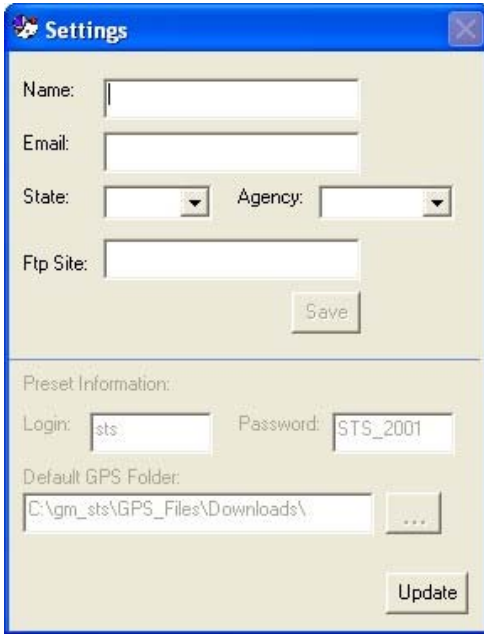
GPS File Uploader



The GPS File Uploader is a new application which simplifies and streamlines the process of getting trap data to the STS database. At its core, the GPS File Uploader is a simple FTP utility which has been customized for the STS project. Files are validated before they are sent to the respective databases. If files are found to have formatting issues, the user is given the option of correcting the problems. Once the CSV files are uploaded to a database node they are loaded by a automatic loading routine. After loading, the user will be emailed a report from the Autoloader service detailing the GPS files loaded into the database.

Setup

When the GPS File Uploader starts for the first time the user is asked to fill in some settings, which will be saved for future use. These settings are shown below.



The Settings dialog box is titled "Settings" and has a blue title bar. It contains the following fields and controls:

- Name: [Text input field]
- Email: [Text input field]
- State: [Dropdown menu]
- Agency: [Dropdown menu]
- Ftp Site: [Text input field]
- Save: [Button]
- Preset Information:
- Login: [Text input field, value: sts]
- Password: [Text input field, value: STS_2001]
- Default GPS Folder: [Text input field, value: C:\gm_sts\GPS_Files\Downloads\]
- Update: [Button]

The email address is where the Autoloader service reports will be emailed detailing the files that were loaded. Once the state and agency fields are filled in, the FTP Site field will automatically be filled in.

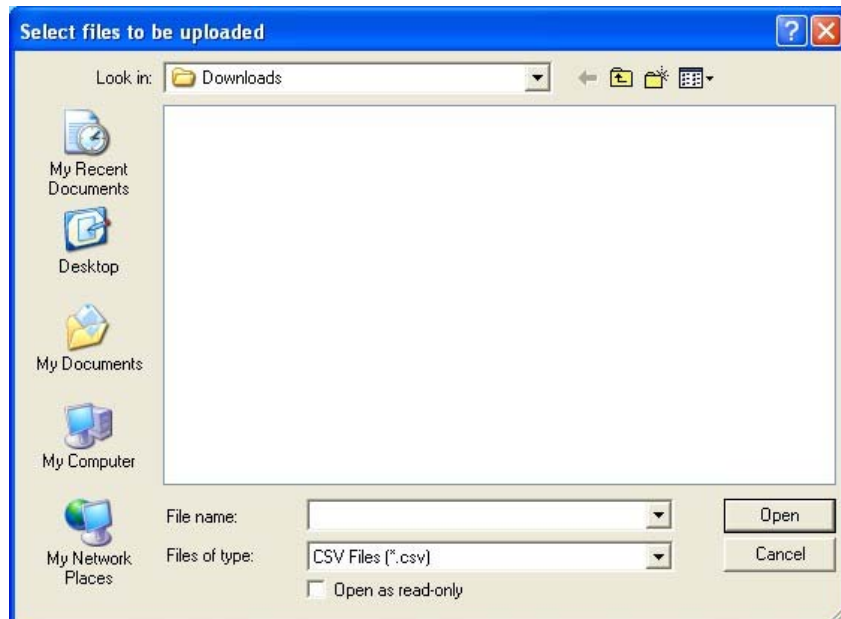
The grayed out fields below the line normally will not need to be changed. The user ID and Password are already set, as is the default GPS folder. The GPS folder location can be changed if the user wishes to have the program point to a different default folder. This is the location of the GPS files, that have been downloaded from the GPS unit using TrapView.

Walk Through One: No Bad Files

Once the user has filled in the settings the main application will finish starting up. The only option at this point will be to select files.



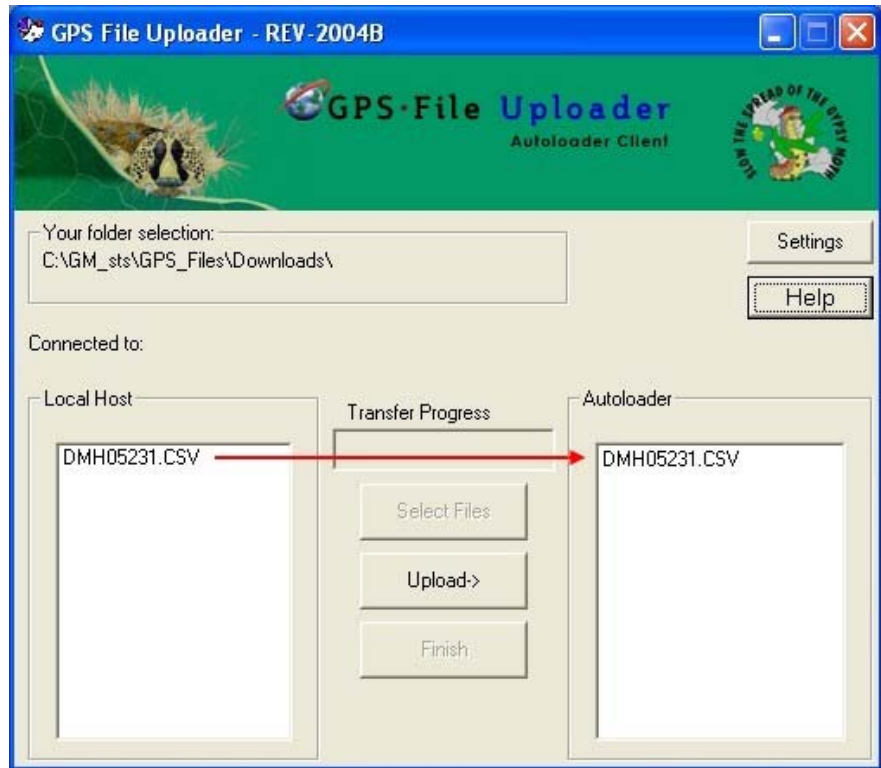
The user selects files to be uploaded. Once the user clicks **Open**, the files will be validated.



After selecting files to upload in this scenario (no bad files), the next step is to initiate the file transfer by clicking the **Upload** button.



As files get sent to the Autoloader service they will be moved from the **Local Host** box to the **Autoloader** box.



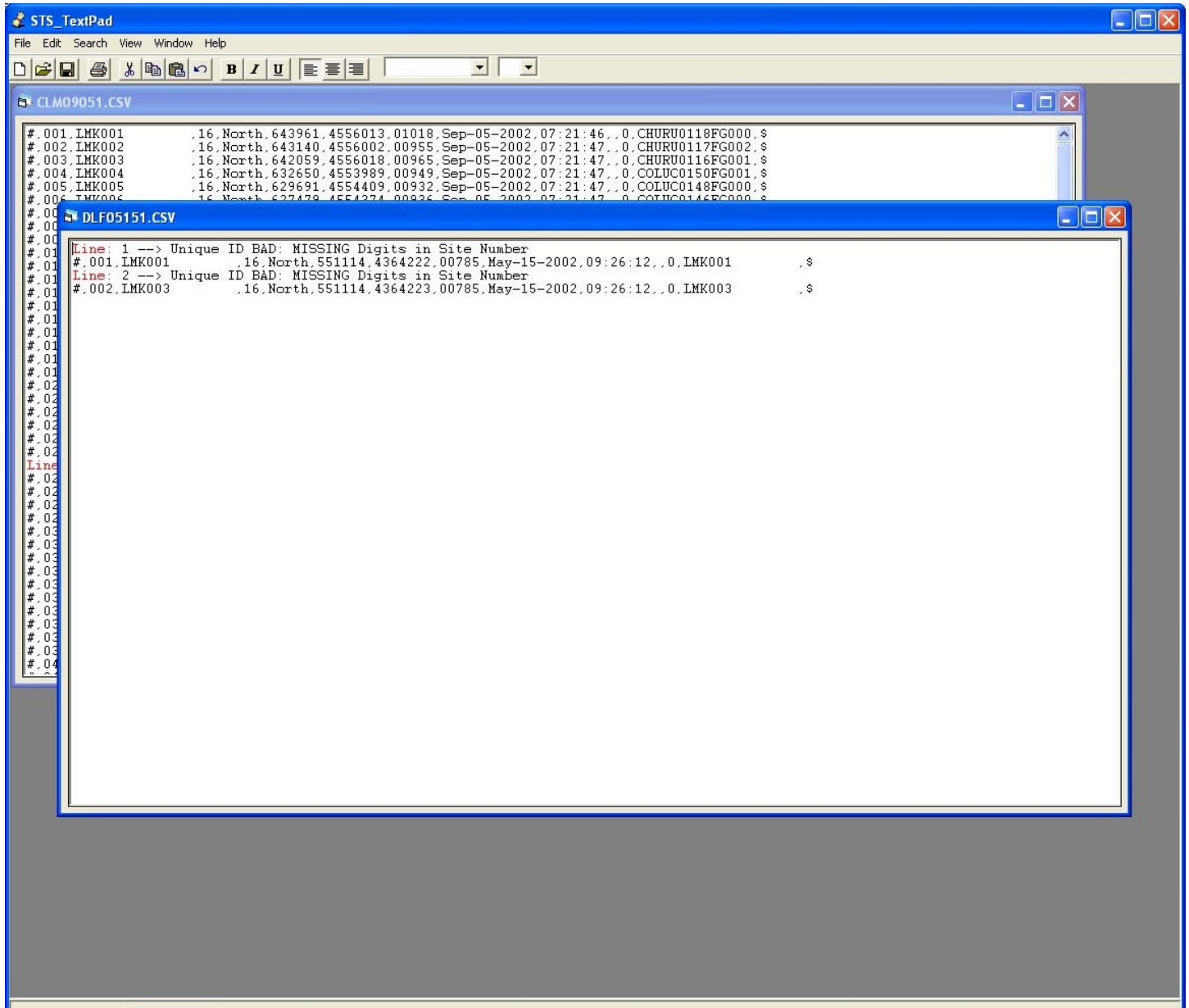
Once all files have been uploaded to the Autoloader service the **Finish** button will become active. Clicking the **Finish** button will end the GPS file uploading session and close the application.

Walk Through Two: With Bad Files

This walk through starts the same as the previous scenario. The user selects files by clicking the **Select Files** button. After clicking **Open** on the file selection window, the program will validate the files.



After all files have been validated a dialog will come up displaying how many bad files were found, and ask if the user wishes to correct them. If the user selects **No**, the bad files will be stored for future correction, all “good” files will be uploaded. If the user selects **Yes**, STS Textpad opens with all bad files loaded for correcting.



Bad records will be preceded by a comment stating what is wrong with the record. The user should go through all files making the necessary corrections and save the file. If the user has questions about what is wrong with a record, there is information under **Help** regarding CSV file formatting. When all changes have been made, close STS Textpad. The GPS File Uploader will then validate the corrected files in order to verify the corrections. If errors still exist the user will again be prompted with the number of bad files, and asked if they wish to correct them. Once there are no bad files or you choose not to make corrections by selecting **No**, the **Upload** button will become active. The user should then click on the **Upload** button to submit files to the Autoloader service.

Special Situations:

Special Situation One: All files bad

If during a upload session all files which the user has selected are bad, and the user chooses not to correct the files, or can not correct the files, the user will receive a warning that all files are bad. At this point all the user will be able to do is close the application. This is because there are no files to upload, due to not correcting any of the bad files. The files can then be sent in later by choosing to correct old bad files the next time the application starts (See special situation two.)

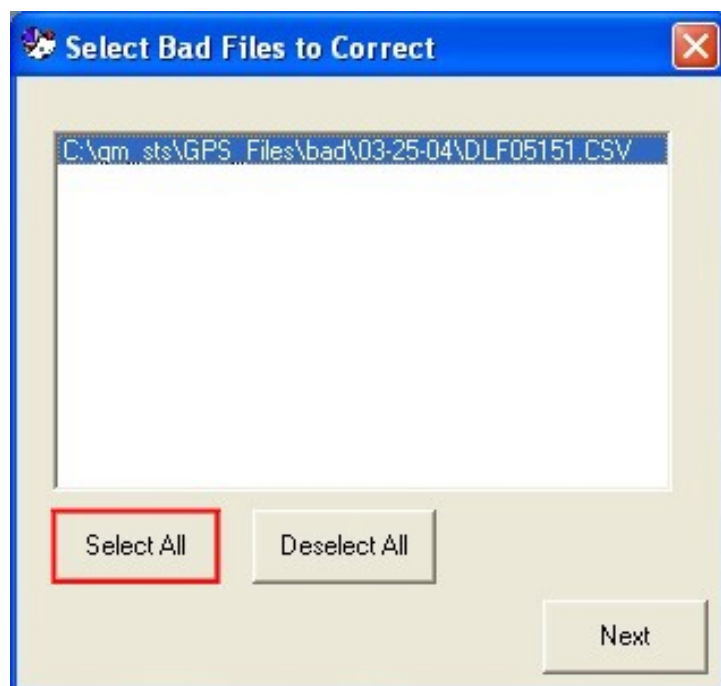
Special Situation Two: Old Bad Files Remaining

If bad files were not corrected during a previous session the user will receive a prompt when the application starts.



If the user chooses not to correct these bad files during this session, the application continues as described previously. However if the user chooses to correct old bad files, another window will appear.

The user can then select which files to correct. Selected files get added to the **Local Host** list on the left side of the main application. You are encouraged to correct all old bad files in maintain the timely submission of data.



Special Situation Three: Unsent Files Exist

If files from a pervious file uploading session did not get sent, for example the loss of a network connection, the user will receive the following message.



After clicking **OK** the user will notice files have been added to their list of files to be uploaded (**Local Host**). These unsent files will be validated along with the files selected during this session.

Special Situation Four: Unchecked files Exist

If files from a pervious file uploading session did not get checked, because of an error in the application, the user will receive the following message.



After clicking **OK** the user will notice files have been added to their list of files to be uploaded (**Local Host**). Like any new files added to the list, these unchecked files will be validated.

File Management & Directory Structure

By default all folders described below can be found in, "C:\GM_STS\GPS_Files\".

Folder Name	Description
Bad*	When a file has been found to have a formatting error the "Bad" file is moved into the bad folder in a folder named using the current date.
Downloads	This is the default location where the program looks for CSV Files. This is also the default folder for the new GPS Downloader found in TrapView.
Orig	Location of original copies of files. When a CSV file is created by the GPS Downloader a copy of the file is placed in this folder. If there is not a copy of the file in the Orig folder the GPS File Uploader will make one.
Queue**	Files located in this folder have been validated and are formatted correctly. Once all files have been processed they will be removed from this folder and sent to the Autoloader service.
Queue\Hold**	When files are selected to be uploaded, they are moved from their current folder into the hold folder. Once validated they are moved into another folder, either queue or bad.
Uploaded	Once files have been sent to the Autoloader service, a copy of the file is moved into a dated folder in the Upload folder.

* Folder is managed by software. Under normal circumstances the user will not need to access this folder.

** Folder is managed by software. The user is strongly encouraged not to access these folders.